

# LMFe6000-JM



LMFe6000NS12-JM (With options)

## ***In The Packaging After The Step, Providing A Handy Labeling***

This unit is a top surface labeling machine with a conveyor to perform the labeling on the top surface of the product.

### **Productivity**

The labeling work by mechanization from manpower, contributing to the improvement of productivity.

### **Variety Registration**

Such as a label affixed position, setting of each type can be registered.

### **Touch Panel**

Simple selection on the touch panel at the time of type switching.



Labeling example

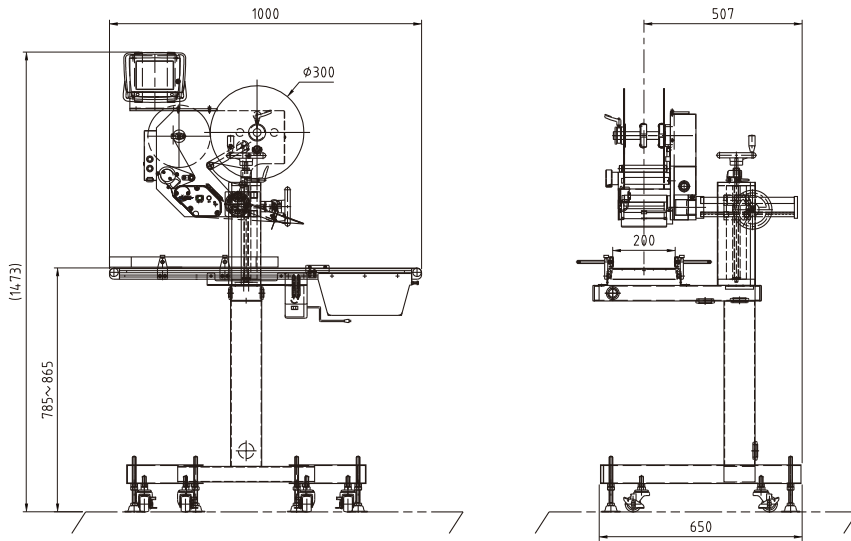


Touch panel (EUI)

#### LABEL SPECIFICATION

Label Width	15mm - 120mm
Mount Width	18mm - 125mm
Label Length	15mm - 200mm
Roll Diameter (O.D.)	φ 300mm
Paper Core (I.D.)	φ 75mm

# Outline Dimensional Drawing (LMFe6000NS12-JM)



(Unit:mm)

## SPECIFICATION

Model	LMFe6000NS12-JM (Left→Right Carrier)	Conveyor Spec.	Belt Width: 200mm
	LMFe6000NS12-JM (Right→Left Carrier)		Length: 1000mm
Labeling Speed	2M/min - 25M/min		Speed: 7M/min - 25M/min (Variable speed)
Variety Registration	200		Products Width: 40mm-195mm
Drive Method	Stepping Motor		Products Height: 40mm-145mm
Label Spec.	Label Width: 15mm-120mm	Conveyor Height	785mm-865mm (Adjustment bolt adjustment)
	Mount Width: 18mm-125mm	System Dimensions	1000mm(W)-1473mm(H)-650mm(D)
	Label Length: 15mm-200mm	The Entire System Weight	approx. 52kg (Including body weight)
	Roll Diameter: (O.D) $\phi$ 300mm	Operating Environment	Temperature: 5°C-40°C
	Paper Core: (I.D) $\phi$ 75mm		Humidity: Under 90%RH (no dew condensation)
Power Supply	AC100V-240V, 140VA (Main Body)	Option	Position indicator
	AC100V, 25VA (Conveyor)		

The specification may differ from conditions of use. Specification and other information are subject to change without notice.

## Further We Propose A Labeling System To Meet The Diverse Needs!!



Applying Labels  
To The Both Sides Surface



Wrapping Labels  
Around The Bottle



Applying  
Band Form Labels



Applying Labels  
To The Empty Bags

 **EDM CORPORATION**

5-2,3-Chome Itabashi, Itabashi-ku, Tokyo, Japan

TEL : +81-3-3964-4852 FAX : +81-3-3962-1277

URL : <http://www.edm-net.co.jp/>

Agency